

MANAGEMENT OF SICK FARM WORKERS

SICKNESS SYMPTOMS

Farm workers can become sick because of harmful germs. The germs that cause these sicknesses can spread to produce...



Nausea



Fever



Vomiting



Jaundice



Stomach Pain



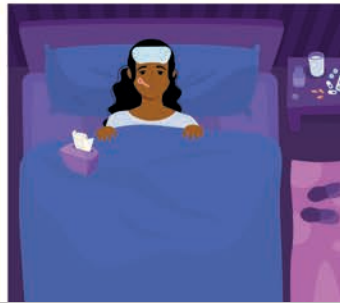
Diarrhea

REPORTING SICKNESS

Sick farm workers **must inform the farm supervisors** of their symptoms. This helps them to...



...make decisions on what to do next based on their symptoms.



...stay at home to prevent germs from spreading.



...return to the farm after being symptom-free

WORKING ON FARM

Farm workers who are sick and come to the farm **must avoid working with fresh produce or food contact surfaces**.



Non-Food Contact Activities



Food Contact Activities



FARM AREAS TO AVOID

Sick farm workers **cannot go into areas** on the farm where fresh produce is **grown, harvested, washed, packed, or stored**.



Growing/ Harvest Areas



Produce Wash Areas



Packing Areas



Storage Areas