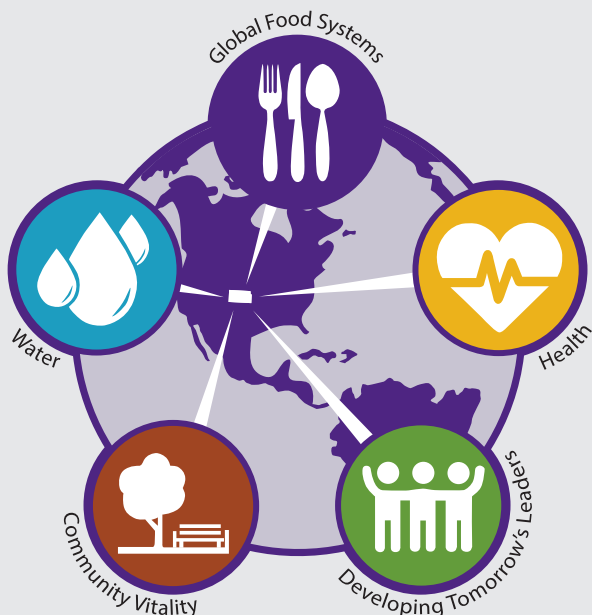


# K-STATE RESEARCH AND EXTENSION

## FOCUSING ON STATEWIDE CHALLENGES

Kansas citizens helped identify five challenges they face every day.



### Global Food Systems

We help improve profits, efficiency and sustainability for Kansas, our nation and the world through innovative research and community-based programs in areas such as genetics, disease prevention, food security and farm bill education.

### Water

To maintain and improve water quality and quantity, we pioneer new practices and techniques, research high-priority issues and effectively communicate research results.

### Community Vitality

We provide leadership, facilitation, research-based expertise and technical assistance to help communities grow and prosper even through complex and contentious issues.

### Health

Our programs promote behaviors and support communities to improve quality of life, healthy development and active behaviors across life stages for all socioeconomic groups.

### Developing Tomorrow's Leaders

We empower Kansans with the skills to lead for a lifetime. Our programs grow leaders with life skills like confidence, responsibility, resilience and compassion.

**647,238**

## DIRECT EDUCATIONAL CONTACTS MADE

by staff and volunteers on campus, regional centers and in all 105 county offices.

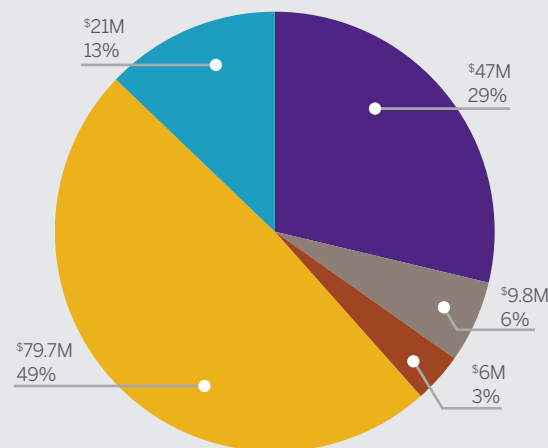
**181,452**

## UNIQUE USERS WHO ACCESSED 671,388 PAGES at [agmanager.info](http://agmanager.info)

**54%**

## OF TOTAL UNIVERSITY RESEARCH

## FY 19 RESEARCH AND EXTENSION FUNDING (in millions)



- Grants, Contracts, Other Funds
- County/District Appropriation (CES)
- State Appropriation (AES/CES)
- Federal Appropriation (AES/CES)
- Main Campus Allocation

# OUR REACH

Through a statewide network of educators, K-State Research and Extension delivers unbiased, research-based information and expertise on issues important to Kansas.

**18,703**  
INDIVIDUALS REACHED  
WITH NUTRITION  
EDUCATION

**107,000**  
DAIRY CATTLE  
MONITORED  
MONTHLY

**72,017**  
YOUTH PARTICIPATED  
IN 4-H

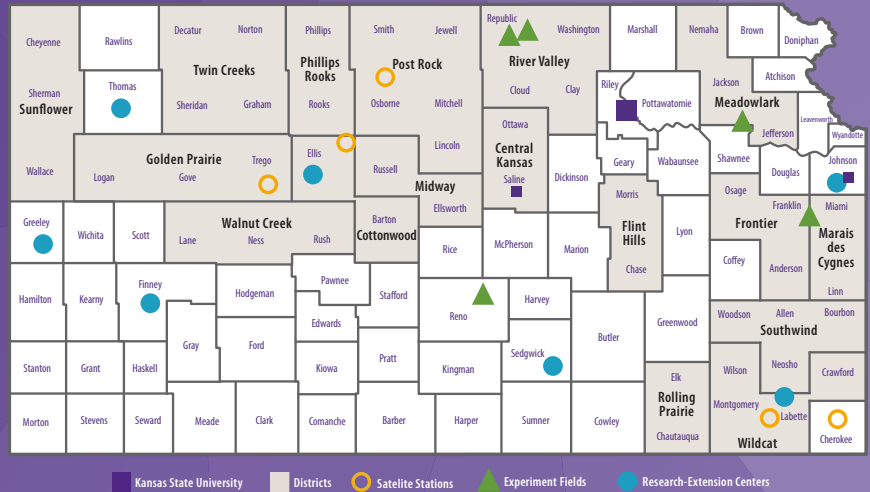
**No. 4**  
ENTOMOLOGY  
DEPARTMENT WORLD  
RANKING

**197,027**  
HOURS INVESTED  
BY COMMUNITY  
VOLUNTEERS

**3**  
USAID FEED THE  
FUTURE INNOVATION  
LABS RENEWED

## A PRESENCE IN ALL 105 COUNTIES

K-State Research and Extension agents live and work in every county to help Kansas residents. Agricultural research facilities are located throughout the state to accommodate climate and soil variability.



## 2018 HIGHLIGHTS

We can hardly scratch the surface on K-State Research and Extension's accomplishments, but here is a quick snapshot:

- » Discovering ways to combat weeds resistant to glyphosate, a popular herbicide.
- » Studying how beef cattle adapt water intake to drought and heat stress.
- » Partnering with local organizations to improve community health by providing research- and evidence-based education and implementing proven strategies.
- » Breeding disease- and drought-resistant crop varieties.
- » Examining how young adults make decisions on financial goals, homeownership, retirement planning and student loans.
- » Developing methods to detect and measure irradiation in pet-food products.
- » Identifying trees that tolerate Kansas soil conditions for community plantings.

**K-STATE**  
Research and Extension

[ksre.k-state.edu](http://ksre.k-state.edu)